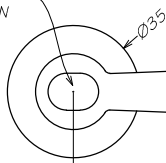


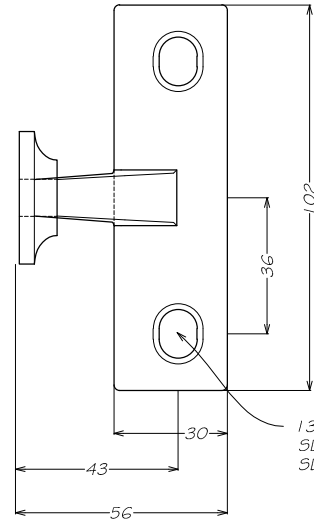
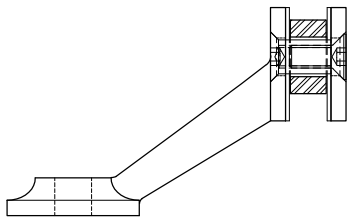
14 x 10mm SLOT FOR
TYPICAL FIXINGS SHOWN



57

- M6 SOCKET SLEEVE
- M6 CSK SCREW, TO SUIT
FIN THICKNESS
- 20 x M10 BUSH, TO SUIT
FIN THICKNESS

VARIABLE FIN THICKNESS
GLASS OR 5.5



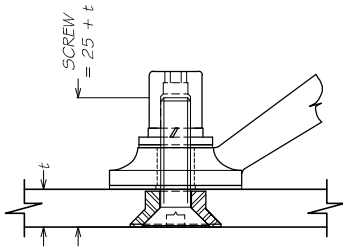
13 x 10mm I/D CHAMFERED
SLOT FOR M6 SOCKET
SLEEVE AND SCREW

1 444-2-1 SPIDER
MASTER COPY
SCALE: 1:2

2 TYPICAL FIXING OPTIONS

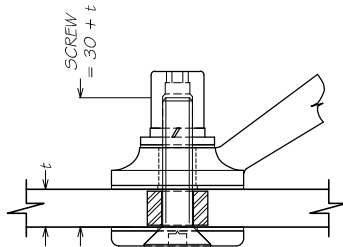
SCALE: NTS

M8 CSK SCREW



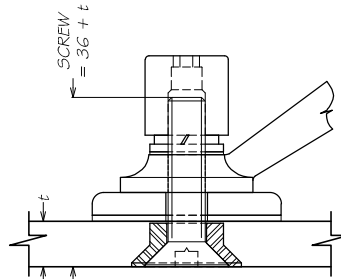
M8 AGA NUT
M8 SPRING WASHER
20 x 2 x M8 FLAT WASHER
20 x 0.8 x M8 FIBRE GASKET
444 SPIDER PALM
35 x 0.8 x M8 FIBRE GASKET
M8 CSK BUSH, TO SUIT GLASS THICKNESS

M8 CSK SCREW -
WITH RADIUS DISC



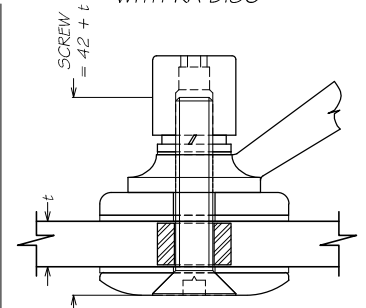
M8 AGA NUT
M8 SPRING WASHER
20 x 2 x M8 FLAT WASHER
20 x 0.8 x M8 FIBRE GASKET
444 SPIDER PALM
35 x 0.8 x M8 FIBRE GASKET
14 x 8.5 BUSH, TO SUIT GLASS THICKNESS
35 x 0.8 x M8 FIBRE GASKET
35 x 4 x M8 BACKING DISC

M10 CSK SCREW



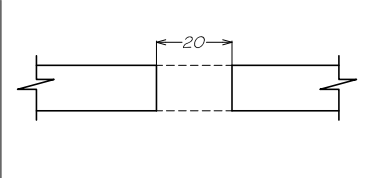
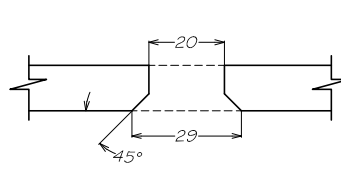
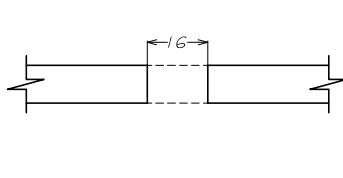
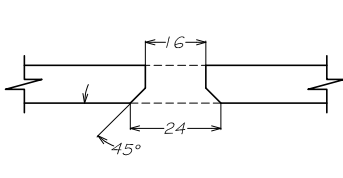
M10 AGA NUT
M10 SPRING WASHER
20 x 2 x M10 FLAT WASHER
20 x 0.8 x M10 FIBRE GASKET
444 SPIDER PALM
50 x 6mm DISC
50 x 10.5 x 0.8 FIBRE GASKET
M10 CSK BUSH, TO SUIT GLASS THICKNESS

M10 CSK SCREW -
WITH RA DISC



M10 AGA NUT
M10 SPRING WASHER
20 x 2 x M10 FLAT WASHER
20 x 0.8 x M10 FIBRE GASKET
444 SPIDER PALM
50 x 6mm DISC
50 x 10.5 x 0.8 FIBRE GASKET
19.5 x 10.5 BUSH, TO SUIT GLASS THCKNESS
50 x 10.5 x 0.8 FIBRE GASKET
50 x 6 x M10 RA DISC

HOLE DETAILS FOR TOUGHENED GLASS



HOLE DETAILS FOR TOUGHENED LAMINATED GLASS

(THESE ARE PROJECT SPECIFIC.
REFER TO MFG FOR DETAILS)

AUSTVISION



METRO FRAMELESS GLASS SYSTEMS
Unit 0/35 Maurice Road, Penrose, Auckland
PO Box 112 186, Penrose, Auckland
P: +64 9 622 2643
F: +64 9 622 2648
www.metroglasstech.co.nz

444 SPIDER SERIES
CATALOGUE DRAWING
444-2-1
INCLUDES FIXING DETAILS
Architect: -
Contractor: -

ISS:	REV	ISSUED	OWN BY	CHKD	DESCRIPTION
01	A	01/09/14	RS	WF	ISSUED FOR CATALOGUE
Scale:	1:2				
Dwg No.:	01				

THIS DOCUMENT IS THE PROPERTY OF METRO GLASSTECH. IT MUST NOT BE COPIED NOR THE CONTENTS PASSED ON TO ANY THIRD PARTY WITHOUT THE CONSENT OF THE COMPANY.