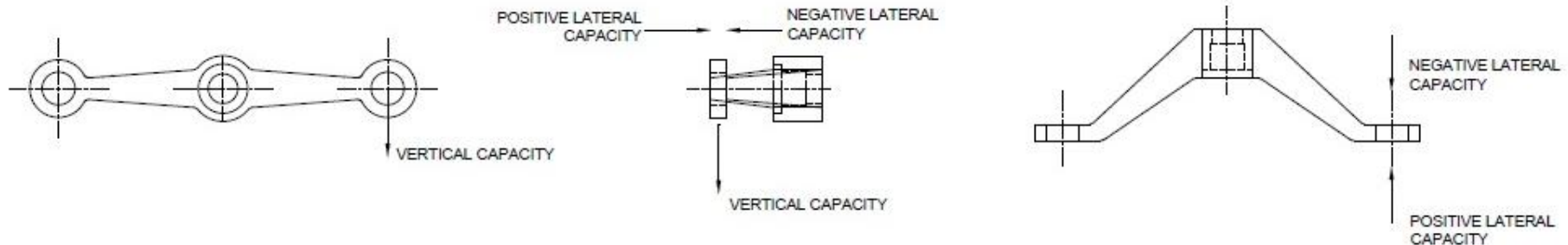


MAX. CAPACITY OF 316 GR. S.S. SPIDER FITTING
 Confirmed by Independent University Laboratory Tests
 ($F_y = 220 \text{ Mpa}$) Includes 2.0 factor of safety

SPIDER FITTING	LATERAL CAPACITY (POSITIVE WIND LOADING)		LATERAL CAPACITY (NEGATIVE WIND LOADING)		VERTICAL CAPACITY	
	LOAD PER ARM (KN)	DEFLECTION PER ARM (mm)	LOAD PER ARM (KN)	DEFLECTION PER ARM (mm)	LOAD PER ARM (KN)	DEFLECTION PER ARM (mm)
Light duty balustrade fittings						
443/2	2.1	0.3	1.6	0.3	1.6	0.1
443/4	1.0	0.2	0.8	0.3	1.8	0.2
Heavy duty structural glass fittings						
446/2M	4.0	0.9	3.5	1.2	3.8	1.0
446/4M	2.6	1.6	2.3	1.8	3.0	2.5



July 2008